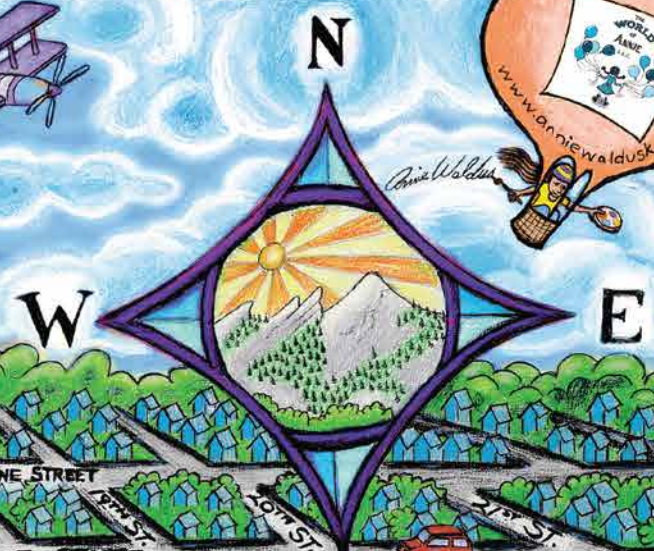


# DOWNTOWN BOULDER VISITOR MAP



MORE SHOPS & RESTAURANTS BETWEEN 11<sup>TH</sup> & 8<sup>TH</sup> STREETS

**THE WEST END**

**PEARL STREET MALL**

**THE EAST END**

MORE SHOPS & RESTAURANTS BETWEEN 15<sup>TH</sup> & 21<sup>ST</sup> STREETS

**KEY**

	RESIDENTIAL		BOULDER B-CYCLE
	COMMERCIAL		PARKING
	FEATURE		ACCESSIBLE PARKING SPACES
	ONE WAY STREET		

## APPAREL

Alpaca Connection – 1334 Pearl St.  
American Apparel – 1126 Pearl St.  
Athleta – 1133 Pearl St.  
Barbara & Company – 1505 Pearl St.  
Billabong – 1101 Pearl St.  
Buffalo Exchange – 1813 Pearl St.  
Cariloha – 1468 Pearl St.  
Cedar & Hyde – 2015 10th St.  
Chelsea – 1646 Pearl St.  
Chloros Pony & Dandelion Toys – 1909 9th St.  
Colorado Limited – 1428 Pearl St.  
Common Era – 1500 Pearl St.  
Crossroads Trading Co. – 1545 Pearl St.  
Endurance Conspiracy – 1717 Pearl St.  
Fjällräven – 1048 Pearl St.  
Free People – 1200 Pearl St.  
Fresh Produce – 1219 Pearl St.  
Goldmine Vintage – 1123 Pearl St.  
Goorin Bros. Hat Shop – 943 Pearl St.  
Installation Shoe Gallery – 2015 13th St.  
Island Farm – 1122 Pearl St.  
Jackalope & Co. – 1126 Pearl St.  
Knit Wit – 2021 Broadway  
MAX Clothing Store – 1177 Walnut St.  
MontBell – 1500 Pearl St.  
Newton Running Lab – 1222 Pearl St.  
Nod & Rose – 901 Pearl St.  
Patagonia – 1212 Pearl St.  
prAna– 1147 Pearl St.  
Ragstock – 1580 Canyon Blvd.  
Ramble On Pearl – 1638 Pearl St.  
Red Fox – 1218 Pearl St.  
The Ritz – 959 Walnut St.  
Savvy on Pearl – 1114 Pearl St.  
Sherpani – 1711 Pearl St.  
Starr’s Clothing Company – 1630 Pearl St.  
Title Nine – 1801 Pearl St.  
Topo Designs – 935 Pearl St.  
Tough Luck Cowboy – 2050 Broadway  
Umba – 2043 Broadway  
Urban Outfitters – 934 Pearl St.  
Violette – 1631 Pearl St.  
Volcom – 1223 Pearl St.  
Weekends – 1200 Pearl St.  
Where the Buffalo Roam – 1320 Pearl St.

## ARTS/CRAFTS/GALLERIES

15th Street Gallery – 1708 15th St.  
Adorned – 1909 9th St.  
Art Mart Gifts – 1326 Pearl St.  
Art + Soul Gallery – 1615 Pearl St.  
Art Source International, Inc.- 1237 Pearl St.  
Boulder Arts & Crafts Gallery – 1421 Pearl St.  
Boulder Museum of Contemporary Art – 1750 13th St.  
Canyon Gallery & Theater – 1001 Arapahoe Ave.  
Crystal Galleries – 1302 Pearl St.  
Fine Art Associates – 1949 Pearl St.  
Momentum – 1625 Pearl St.  
Nature’s Own – 1215 Pearl St.  
Nomad Designs Beads & Folk Art – 1909 9th St.  
PosterScene – 1505 Pearl St.  
Rembrandt Yard Event Center & Art Gallery – 1301 Spruce St.  
Smith-Klein Gallery – 1116 Pearl St.  
Voss Art + Home – 2037 13th St.

## AUTO

Arapahoe Import Service – 1722 Arapahoe Ave.  
Arapahoe Motors – 1914 Arapahoe Ave.  
Conoco – 1201 Arapahoe Ave.  
Peerless Tire Co. – 2008 Pearl St.  
Shell – 1480 Canyon Blvd.  
Valero – 1704 Arapahoe Ave.  
Vanatta Electric – 1981 8th St.

## BANKS

AMG National Trust – 1155 Canyon Blvd.  
ANB Bank – 1360 Walnut St.  
Bank of America – 1917 Broadway  
Chase Bank – 1301 Canyon Blvd.  
CityWide Bank – 1611 Canyon Blvd.  
Colorado Business Bank – 2025 Pearl St.  
Colorado State Bank and Trust – 1505 Pearl St.  
Community Banks of Colorado – 2049 Broadway  
FirstBank – 2120 Broadway  
First National Bank – 1155 Canyon Blvd.  
First Western Trust – 1155 Canyon Blvd.  
Flatirons Bank– 1095 Canyon Blvd.  
Great Western Bank – 1900 9th St.  
Guaranty Bank and Trust Company – 1300 Walnut St.  
Sunflower Bank – 1738 Pearl St.  
US Bank – 1495 Canyon Blvd.  
Vectra Bank – 1700 Pearl St.  
Wells Fargo – 1242 Pearl St.  
Wells Fargo – 1420 Canyon Blvd.

## BOOKS/MUSIC/VIDEO

Beat Book Shop – 1200 Pearl St.  
Boulder Book Store – 1107 Pearl St.  
Boulder Drum Studio – 1320 Pearl St.  
Christian Science Reading Room – 1434 Pearl St.  
Goodrich Violin Shop – 1045 Pearl St.  
Lighthouse Bookstore – 1201 Pearl St.  
Red Letter Secondhand Books – 1737 Pearl St.  
Trident Booksellers & Café – 940 Pearl St.

## CARTS

Boulder Bowls – 1300 Pearl St.  
Escondido Imports – 1400 Pearl St.  
Fast Eddie’s Hot Dogs – 1300 Pearl St.  
Freddie’s Hot Dogs – 1100 Pearl St.  
Glacier Gelato & Sorbet – 1300 Pearl St.  
Glacier Ice Cream – 1400 Pearl St.  
Heads Up – 1300 Pearl St.  
McDevitt Taco Supply – 1300 Pearl St.  
Pearl St. Grill – 1100 Pearl St.  
Sol Stones – 1300 Pearl St.  
Sun Spot – 1200 Pearl St.  
Sunshine Shave Ice – 1200 Pearl St.  
Trek Light Gear – 1200 Pearl St.

## CHURCHES

First Congregational – 1128 Pine St.  
First Presbyterian Church – 1820 15th St.  
First United Methodist – 1421 Spruce St.  
Pine Street Church – 1237 Pine St.  
Sacred Heart of Jesus Church – 1317 Mapleton St.  
Shambhala Center – 1345 Spruce St.  
St. John’s Episcopal Church – 1419 Pine St.  
Trinity Lutheran – 2200 Broadway

## ENTERTAINMENT/ACTIVITIES

Color Me Mine – 1938 Pearl St.  
eTown – 1535 Spruce St.  
Fabricate – 2023 17th St.  
Food Lab – 1825 Pearl St.  
Enigma Escape Rooms – 1426 Pearl St.  
PoshSplat Paint & Wine Studio – 2035 Broadway  
The Riverside – 1724 Broadway

## GIFTS/STATIONERY/TOYS

Alpine Modern Shop + Coffee Bar – 1048 Pearl St. #109  
Art Mart Gifts – 1326 Pearl St.  
Bayleaf on Pearl – 1222 Pearl St.  
Bliss – 1643 Pearl St.  
Boulder Bazaar – 1500 Pearl St.  
Boulder Nepal – 1330 Pearl St.  
Boulderado Emporium Gift Shop – 2115 13th St.  
Clothes Pony & Dandelion Toys – 1909 9th St.  
Crystal Galleries – 1302 Pearl St.  
Gypsy Jewel – 820 Pearl St.

## Gifts / Stationery / Toys continued...

Into the Wind – 1408 Pearl St.  
Ku Cha House of Tea – 1141 Pearl St.  
Liberty Puzzles – 1468 Pearl St.  
Little Buddha Imports – 1727 Pearl St.  
Lunieva – 1727 Pearl St.  
Momentum – 1625 Pearl St.  
Nature’s Own – 1215 Pearl St.  
Old Tibet – 948 Pearl St.  
The Envelope Please – 1844 Pine St.  
Tibet Gallery – 1916 13th St.  
Tough Luck Cowboy – 2050 Broadway  
Two Hands Paperie – 803 Pearl St.  
Yeti Arts & Crafts – 2015 Broadway  
Zuni Fetishes – 1424 Pearl St.

## HAIR SALONS & DAY SPAS

1313 A Salon – 1313 Spruce St.  
Bleu Chair Salon – 1966 13th St.  
The Dragontree Spa – 1521 Pearl St.  
The Honey Pot – 2019 19th St.  
La Belle Nail Salon – 1962 13th St.  
Marianna’s L’Esthetique Medi Spa – 1215 Spruce St.  
The Parlour – 1037 Walnut St.  
Paul Morrison Colours – 2015 15th St.  
Pompadours Hair Salon Aveda – 1320 Pearl St.  
Salon Liquid – 1100 Spruce St.  
The Sidedoor Salon – 2070 Broadway  
St Julien Hotel and Spa – 900 Walnut St.  
Sunburst-Full Service Salon – 956 Pearl St.  
ten20 Nail & Waxing Spa – 2005 Pearl St.  
Twig Salon & Spa – 1831 Pearl St.  
Voodoo Hair Lounge – 2100 Pearl St.  
West End Salon – 949 Walnut St.

## HEALTH/FITNESS/PERSONAL CARE

Bodywork Bistro – 1100 Spruce St.  
Boulder Psychic Institute – 1332 Pearl St.  
Iris Body Piercing – 1713 Pearl St.  
Ivy Lazer – 1911 11th St.  
Lush Cosmetics – 1312 Pearl St.  
Massage Specialists – 1640 Broadway  
One Boulder Fitness – 1800 Broadway  
Pharmaca Integrative Pharmacy – 1647 Pearl St.  
Rebecca’s Herbal Apothecary & Supply – 1227 Spruce St.  
Six Persimmons Apothecary – 728 Pearl St.  
St Julien Hotel and Spa – 900 Walnut St.  
Tru Skincare – 956 Pearl St.

## HOME/KITCHEN/GARDEN

Alpine Modern Shop – 1048 Pearl St. #109  
Bartlett Interiors – 2020 Pearl St.  
Bayleaf on Pearl – 1222 Pearl St.  
Bedell & Co. Fine Antiques & Estate Jewelry – 767 Pearl St.  
Boulder Furniture Arts – 1200 Pearl St.  
Cariloha – 1468 Pearl St.  
Cedar & Hyde – 2015 10th St.  
Chantique – 2020 11th St.  
Fabricate – 2023 17th St.  
Fawns Leap Botanical Arts – 2019 10th St.  
HW Home – 1941 Pearl St.  
Island Farm – 1122 Pearl St.  
Oliverde – 2027 Broadway  
Peppercorn – 1235 Pearl St.  
Savory Spice – 2041 Broadway  
Top Hat Janitorial Supply – 1729 Pearl St.  
Voss Art + Home – 2037 13th St.

## HOTELS/B&BS

Basecamp Boulder – 2020 Arapahoe  
Boulder University Inn – 1632 Broadway  
The Bradley Boulder Inn – 2040 16th St.  
Briar Rose Bed and Breakfast – 2151 Arapahoe Ave.  
Hotel Boulderado – 2115 13th St.  
St Julien Hotel and Spa – 900 Walnut St.

## JEWELRY

Adorned – 1909 9th St.  
Alex and Ani – 1505 Pearl St.  
Angie Star Jewelry – 1807 Pearl St.  
Antiquariat – 2014 Broadway  
Bedell & Co. Fine Antiques & Estate Jewelry – 767 Pearl St.  
Carla Morrison Fine Jewelry – 2017 10th St.  
Christine Marguerite Designs – 1721 Pearl St.  
Classic Facets Antique Jewelry – 942 Pearl St.  
El Loro Jewelry & Clog Co. – 1416 Pearl St.  
Gypsy Jewelry – 820 Pearl St.  
Hurdle’s Jewelry – 1402 Pearl St.  
J.Albrecht Designs Master Goldsmiths – 951 Pearl St.  
John Atencio – 1048 Pearl St.  
Little Jewel – 1225 Pearl St.  
Peter Rosen Jewelry Designer – 1600 Pearl St.  
Starfish – 1136 Pearl St.  
Todd Reed – 2015 Pearl St.

## LIQUOR/MARKETS/SMOKE SHOPS & DISPENSARIES

Alfalfa’s Market – 1651 Broadway  
Buddha’s & Goudha’s Enlightened Smoke Shop – 2009 13th St.  
Cured – 1825 Pearl St. & 2019 10th St.  
The Dandelion – 845 Walnut St.  
The General Store – 1407 Walnut St.  
Green Piece Pipe & Hydro – 1200 Pearl St.  
Helping Hands Dispensary – 1021 Pearl St.  
Liquor Mart – 1750 15th St.  
Lolita’s Market & Deli – 800 Pearl St.  
Mile High Pipe & Tobacco – 1144 Pearl St.  
MMJ America – 1909 Pearl St.  
Trill Alternatives – 1537 Pearl St.  
The Village Green Society – 2043 16th St.  
West End Wine Shop – 777 Pearl St.

## NIGHT SPOTS/ENTERTAINMENT

The Attic Bar & Bistro – 949 Walnut St.  
The Bitter Bar – 835 Walnut St.  
Bohemian Biergarten – 2017 13th St.  
Boulder House – 1109 Walnut St.  
Boulder Theater – 2032 14th St.  
Centro Latin Kitchen & Refreshment Palace – 950 Pearl St.  
Conor O’Neill’s Irish Pub & Restaurant – 1922 13th St.  
eTown – 1535 Spruce St.  
Johnny’s Cigar Bar – 1801 13th St.  
Lazy Dog Sports Bar & Grill – 1346 Pearl St.  
License No. 1 – 2115 13th St.  
Mountain Sun Pub & Brewery – 1535 Pearl St.  
Nitro Club – 1124 Pearl St.  
Pearl Street Pub & Cellar – 1108 Pearl St.  
Press Play – 1005 Pearl St.  
Shine Restaurant & Gathering Place – 2027 13th St.  
Sundown Saloon – 1136 Pearl St.  
Tahona Tequila Bistro – 1035 Pearl St.  
Tonic Herban Lounge – 2011 10th St.  
Walrus Saloon – 1911 11th St.  
West End Tavern – 926 Pearl St.

## OPTICAL

EnVision Boulder – 1011 Pearl St.  
Zeal Optics – 1230 Spruce St.

## OUTDOOR & SPORTING GOODS

Athleta – 1133 Pearl St.  
Endurance Conspiracy – 1717 Pearl St.  
Fjällräven – 1048 Pearl St.  
Front Range Anglers – 2344 Pearl St.  
Full Cycle – 1795 Pearl St.  
Gunsport – 1707 14th St.  
Meta Skateboards – 1505 Pearl St.  
MontBell – 1500 Pearl St.

## Outdoor & Sporting Goods continued...

Newton Running Lab – 1222 Pearl St.  
Patagonia – 1212 Pearl St.  
prAna – 1147 Pearl St.  
Red Fox – 1218 Pearl St.  
Rocky Mountain Anglers – 1904 Arapahoe Ave.  
Title Nine Sports – 1801 Pearl St.  
Topo Designs – 935 Pearl St.  
University Bicycles – 839 Pearl St.  
Vecchio’s Bicicletteria – 1833 Pearl St.

## PETS

Arapahoe Animal Hospital – 1730 15th St.  
Farfel’s Farm – 906 Pearl St.

## RESTAURANTS

**ASIAN / SUSHI / INDIAN**  
Amu Sake Bar & Restaurant – 1221 Spruce St.  
Fuji Bar & Café – 2018 Broadway  
Hapa Sushi Grill & Sake Bar – 1117 Pearl St.  
Jaipur – 1214 Walnut St.  
Japango – 1136 Pearl St.  
Kasa Japanese Grill & Bar – 1468 Pearl St.  
Moongate Asian Bistro & Sushi Bar – 1628 Pearl St.  
Sherpa’s Adventurers – 825 Walnut St.  
Sushi Tora – 2014 10th St.  
Sushi Zanmai – 1221 Spruce St.  
Zoe Ma Ma – 2010 10th St.

## BREWPUBS

Mountain Sun Pub & Brewery – 1535 Pearl St.  
Shine Restaurant & Gathering Place – 2027 13th St.  
Walnut Brewery – 1123 Walnut St.  
West Flanders Brewing Company – 1125 Pearl St.

## CASUAL

The Attic Bar & Bistro – 949 Walnut St.  
Bohemian Biergarten – 2017 13th St.  
Bramble & Hare – 1970 13th St.  
Cheesecake Factory – 1401 Pearl St.  
Conor O’Neill’s Irish Pub & Restaurant – 1922 13th St.  
Corner Bar – 2115 13th St.  
Eureka! – 1048 Pearl St.  
Foolish Craig’s Cafe – 1611 Pearl St.  
Ghost BBQ & Spirits – 2028 14th St.  
Lazy Dog Sports Bar & Grill– 1346 Pearl St.  
Lucile’s Creole Café – 2124 14th St.  
Mountain Sun Pub & Brewery – 1535 Pearl St.  
Next Door – 1035 Pearl St.  
Old Chicago Pizza and Tap Room – 1102 Pearl St.  
Pearl Street Pub & Cellar – 1108 Pearl St.  
Rueben’s Burger Bistro – 1800 Broadway  
Shine Restaurant & Gathering Place – 2027 13th St.  
Snooze, An A.M. Eatery – 1617 Pearl St.  
Ted’s Montana Grill – 1701 Pearl St.  
Thrive Raw Vegan – 1504 Arapahoe St.  
Walnut Brewery – 1123 Walnut St.  
West End Tavern – 926 Pearl St.  
West Flanders Brewing Company – 1125 Pearl St.  
World of Beer – 921 Pearl St.  
Zeal Food for Enthusiasts – 1710 Pearl St.

## COFFEE / TEA / JUICE & SWEETS

Alpine Modern Shop + Coffee Bar – 1048 Pearl St. #109  
Amante Coffee – 1035 Walnut St.  
Ben & Jerry’s Scoop Shop – 1203 Pearl St.  
Boulder Baked – 1911 Broadway  
Boulder Dushanbe Teahouse – 1770 13th St.  
Boxcar Coffee Roasters – 1825 Pearl St.  
Brewing Market Coffee – 1918 13th St.  
The Cup Espresso Cafe – 1521 Pearl St.  
Fior di Latte – 1433 Pearl St.  
Kilwins Boulder – 1426 Pearl St.  
Ku Cha House of Tea – 1141 Pearl St.  
Laughing Goat – 1709 Pearl St.  
Lindsay’s Boulder Deli @ Häagen Dazs – 1148 Pearl St.  
Ozo Coffee – 1015 Pearl St.

## Coffee /Tea / Juice & Sweets continued...

Piece, Love & Chocolate – 805 Pearl St.  
The Riverside – 1724 Broadway  
Rocket Fizz – 1441 Pearl St.  
Rocky Mountain Chocolate Factory – 1300 Pearl St.  
Smooch Frozen Yogurt & Mochi – 1926 14th St.  
Spruce Confections – 767 Pearl St.  
Starbucks Coffee – 1427 Pearl St.  
Tee & Cakes – 1932 14th St.  
Trident – 940 Pearl St.  
The Unseen Bean – 2052 Broadway  
Wonder – 946 Pearl St.

## CONTEMPORARY / FINE DINING

Arcana – 909 Walnut St.  
Black Cat – 1964 13th St.  
Boulder ChopHouse & Tavern – 921 Walnut St.  
Boulder Dushanbe Teahouse – 1770 13th St.  
Brasserie Ten Ten – 1011 Walnut St.  
Frasca Food & Wine – 1738 Pearl St.  
Jax Fish House – 928 Pearl St.  
Jill’s Restaurant – 900 Walnut St.  
The Kitchen Bistro – 1039 Pearl St.  
L’Atelier – 1739 Pearl St.  
Leaf Vegetarian Restaurant – 2010 16th St.  
Mateo – 1837 Pearl St.  
The Mediterranean – 1002 Walnut St.  
OAK at Fourteenth – 1400 Pearl St.  
PMG Wine Bar – 2018 10th St.  
Riff’s Urban Fare – 1115 Pearl St.  
SALT Bistro – 1047 Pearl St.  
Spruce Farm & Fish – 2115 13th St.  
Upstairs – 1039 Pearl St.  
Via Perla – 901 Pearl St.  
Wild Standard – 1043 Pearl St.

**ITALIAN / MEDITERRANEAN / PIZZA**  
Arabesque – 1634 Walnut St.  
Falafel King – 1314 Pearl St.  
The Mediterranean – 1002 Walnut St.  
Nick-N-Willy’s Pizza – 801 Pearl St.  
Pasta Jay’s – 1001 Pearl St.  
Pizza Colore – 1336 Pearl St.  
Pizzeria Locale – 1730 Pearl St.  
Sforno Trattoria Romana – 1308 Pearl St.  
Via Perla – 901 Pearl St.

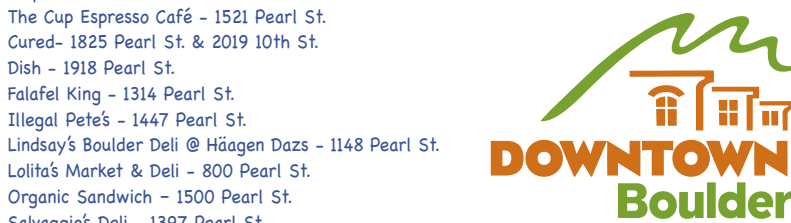
**MEXICAN / LATIN / SOUTH AMERICAN**  
Aji – 1601 Pearl St.  
Centro – 950 Pearl St.  
Chipotle Mexican Grill – 919 Pearl St.  
Illegal Pete’s – 1447 Pearl St.  
Rio Grande Mexican Restaurant – 1101 Walnut St.  
TJACO – 1175 Walnut St.  
Tahona Tequila Bistro – 1035 Pearl St.

## BOULDER B-CYCLE STATIONS

11th & Pearl	13th & Spruce
1015 Arapahoe	15th & Pearl
1777 Broadway	20th & Pearl
14th & Canyon	13th & Arapahoe

### Produced By

Downtown Boulder Business Improvement District & City of Boulder Community Vitality (Parking, Access, Economic Vitality & District Management)



**303-449-3774**  
**BoulderDowntown.com**  
**1942 Broadway Suite 301**

## SERVICES

Art Cleaners, Inc. – 1715 15th St.  
Eight Days A Week Imaging/Copy Center – 840 Pearl St.  
Perry’s Shoe Shop Inc. – 1711 15th St.  
uBreakiFix (electronics repair) – 1136 Spruce St.

## SHOES

Crocs – 1129 Pearl  
El Loro Jewelry & Clog Co. – 1416 Pearl St.  
Installation Shoe Gallery – 2015 13th St.  
Newton Running Lab – 1222 Pearl St.  
Pedestrian Shoes – 1425 Pearl St.  
Perry’s Shoe Shop Inc. – 1711 15th St.  
Sand & Salt Beach Company – 1110 Pearl St.  
Savvy on Pearl – 1114 Pearl St.  
Shoe Fly – 947 Pearl St.  
Steve Madden – 1142 Pearl St.  
Two Sole Sisters – 1703 Pearl St.

## PUBLIC BUILDINGS

Boulder Chamber of Commerce – 2440 Pearl St.  
Boulder Convention & Visitors Bureau – 2440 Pearl St.  
Boulder County Justice Center – 1777 6th St.  
Boulder County Courthouse – 13th and Pearl St.  
Carnegie Library – 1125 Pine St.  
Municipal Building – 1777 Broadway  
Boulder Public Library – 1001 Arapahoe Ave.  
RTD Bus Station – 1800 14th St.  
U.S. Post Office – 1905 15th St.  
YWCA – 2222 14th St.

## PARKING STRUCTURES

### City Owned:

11th & Spruce  
10th & Walnut (St Julien Hotel)  
11th & Walnut  
14th & Walnut (RTD Bus Station)  
15th & Pearl

### Privately Owned:

15th & Spruce  
One Boulder Plaza  
All parking structures are free Saturdays, Sundays & Holidays except One Boulder Plaza and 15th & Spruce

## PARKING LOTS

Broadway & Spruce  
14th & Canyon (by permit only weekdays)  
13th & Walnut  
Public Library – 11th & Arapahoe  
Municipal Building – 11th & Canyon